

#CLOUD in Paris, France by Philippe Chiambaretta Architecte (PCA-Stream)

March 2nd, 2016 by Sumit Singhal *Article source: Philippe Chiambaretta Architecte (PCA-Stream)*

PCA Stream has just completed the restructuring and redesign of four historical buildings into one unique office building in the center of Paris. Contemporary forms of change are at the heart of Philippe Chiambaretta's architectural design process. For this project, the firm sought to strike a difficult-to-achieve balance between internal cohesion, spatial quality, heritage preservation, and environmental performance.



Image Courtesy © Jean-Philippe Mesguen

- **Project:** #CLOUD
- **Location:** Rue Du Quatre-Septembre, Rue De Richelieu, Rue De Grétry And Rue Gramont, 75002 Paris
- **Photography:** Clément Guillaume, Jean-Philippe Mesguen
- **Contractor:** SFL (Société Foncière Lyonnaise)
- **Programme:** major restructuring of office buildings

- **Engineers:** Khephren [structure engineer] / VS-A [façades] / Elithis [fluids]
- **Net surface area:** 38 000 m²
- **Calendar:** completed in november 2015
- **Cost:** 100 M€



Image Courtesy © Jean-Philippe Mesguen

Rehauling the overall organization and rationalizing the buildings called for a major renovation that simultaneously had to maintain the character of the buildings and preserve the listed components.

The various components of the project were collated under the hashtag #cloud.paris, thus providing clarity and unity, from the organization of the complex as a whole to the interior ambiances, including the architectural expression.

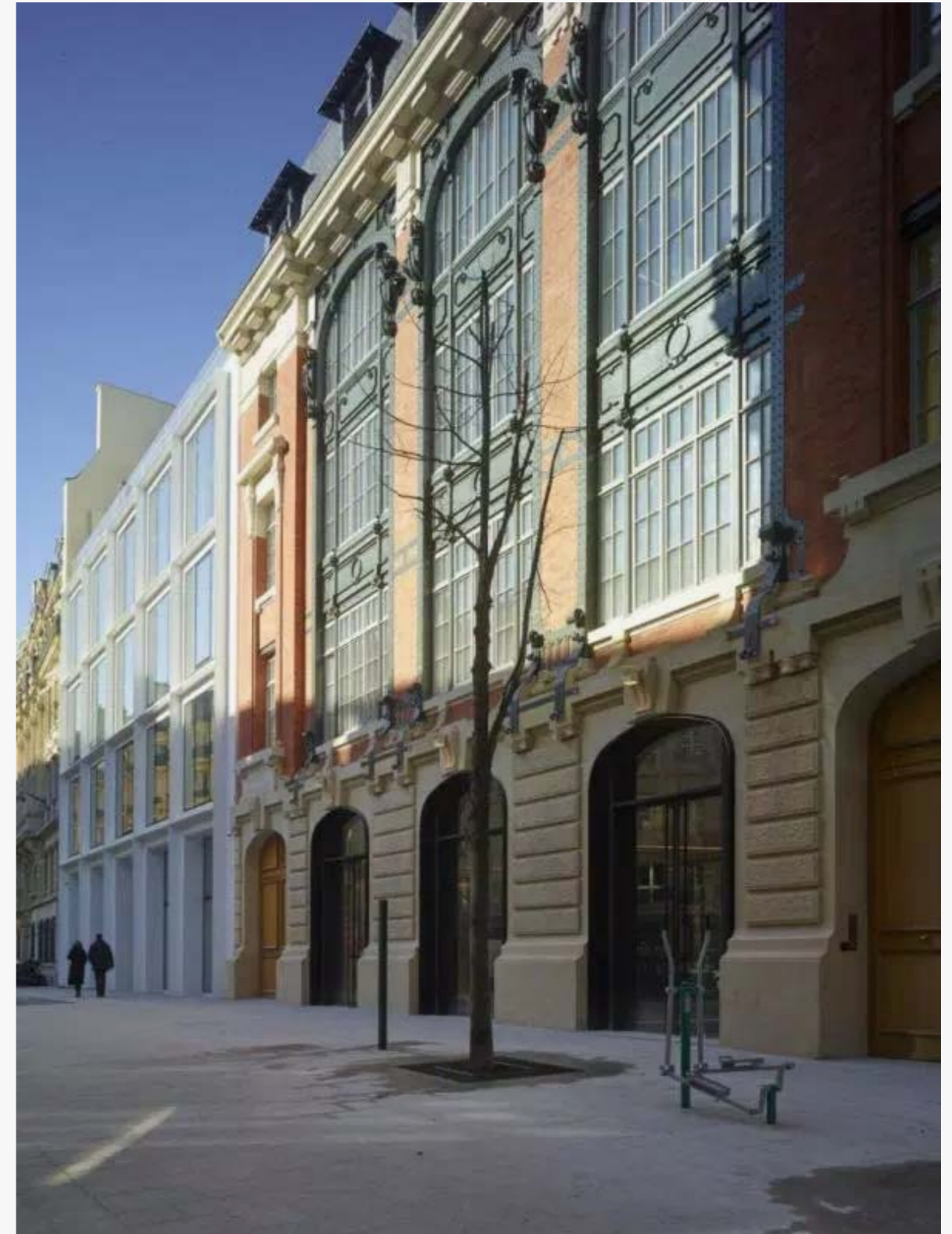


Image Courtesy © Jean-Philippe Mesguen

- **Clarifying the building complex**

In order to streamline and harmonize the whole of the building complex, forty-five percent of the total area was demolished. Facades were realigned, floor framings were reconnected, and a new building outline with an open floor plan was determined. The underground levels were the most affected by these heavy works and 11,000m² of basement were demolished, compared with 6,200 m² of the



Image Courtesy © Clément Guillaume

Reframing the courtyards and ensuring their continuity enabled the creation of a vast interior space around which the program is organized. The main entrance is located in the industrial *hôtel* of Rue Ménars, whose façade is historically listed.

Together with the business center, the program has a combined active surface of 33,200m² for a capacity of 2,500 people.



Image Courtesy © Clément Guillaume

- **Unity of the Façade and the Building Block**

This significant restructuring is an example of contemporary architectural style that manages to safeguard listed heritage features within a unified whole.

The façade of the former industrial *hôtel* Rue Ménars is caught between two evenly white matching

façades with symmetrical square window grids. The impressive building with a rounded façade on the intersection between Rue de Richelieu and Rue Ménars has defined the new architectural style that applies to the whole building, up to its courtyard elevations.

It retains its lines of strictly identical large square windows and the crowning of the building in successively receding stories. The outer skin is made from a clear material that brings both refinement and presence within the neighborhood.



Image Courtesy © Jean-Philippe Mesguen



Image Courtesy © Clément Guillaume

- **Bringing it all to light**

Historically, light is modernity, and here it is no exception: light is key to reclaiming interior spaces. The whole building is now basked in natural light that comes not only from its street-side façades but also

from its courtyards—both inside and out. The reframing of the courtyards allows for an increased light exposure and comes with storied terraces that crown the building, all of them accessible and landscaped.



Image Courtesy © Clément Guillaume



Image Courtesy © Jean-Philippe Mesguen

The propagation of light also rests on the uniform white façades with their generous array of windows on the courtyard side. The main courtyard is subdivided in three parts with different thermal characteristics: a covered atrium, an intermediate space, and an outside space.



Image Courtesy © Clément Guillaume

Ultimately, what appears from within the block is a new building. From this standpoint, the constraints and unexpected twists and turns of this thorough and extensive renovation have all but been forgotten.

The redevelopment is highly visible when facing the main part of the building, at its rounded front at the corner of Rue de Richelieu and Rue de Ménars. There, the historical transformations required of contemporary Paris are revealed in an epiphany.



Image Courtesy © Clément Guillaume



Image Courtesy © Jean-Philippe Mesguen